



CHURCHES AND MOSQUES

IN SOMOLU DISTRICT

PREPARED BY:

- ENGR. FANU SEWANU .S
- ENGR. OSHINYIMIKA OLUKOREDE .T
- ARC. EKANEM DAVID .J
- ENGR. ADISA ABIDEMI .A
- ENGR. ODUNUGA OLAOLUWA .A
- ENGR. ABIODUN FUNMI .A
- ENGR. ABIOYE MUDASHIRU .W
- ARC. OLAITAN OLAYEMI .T



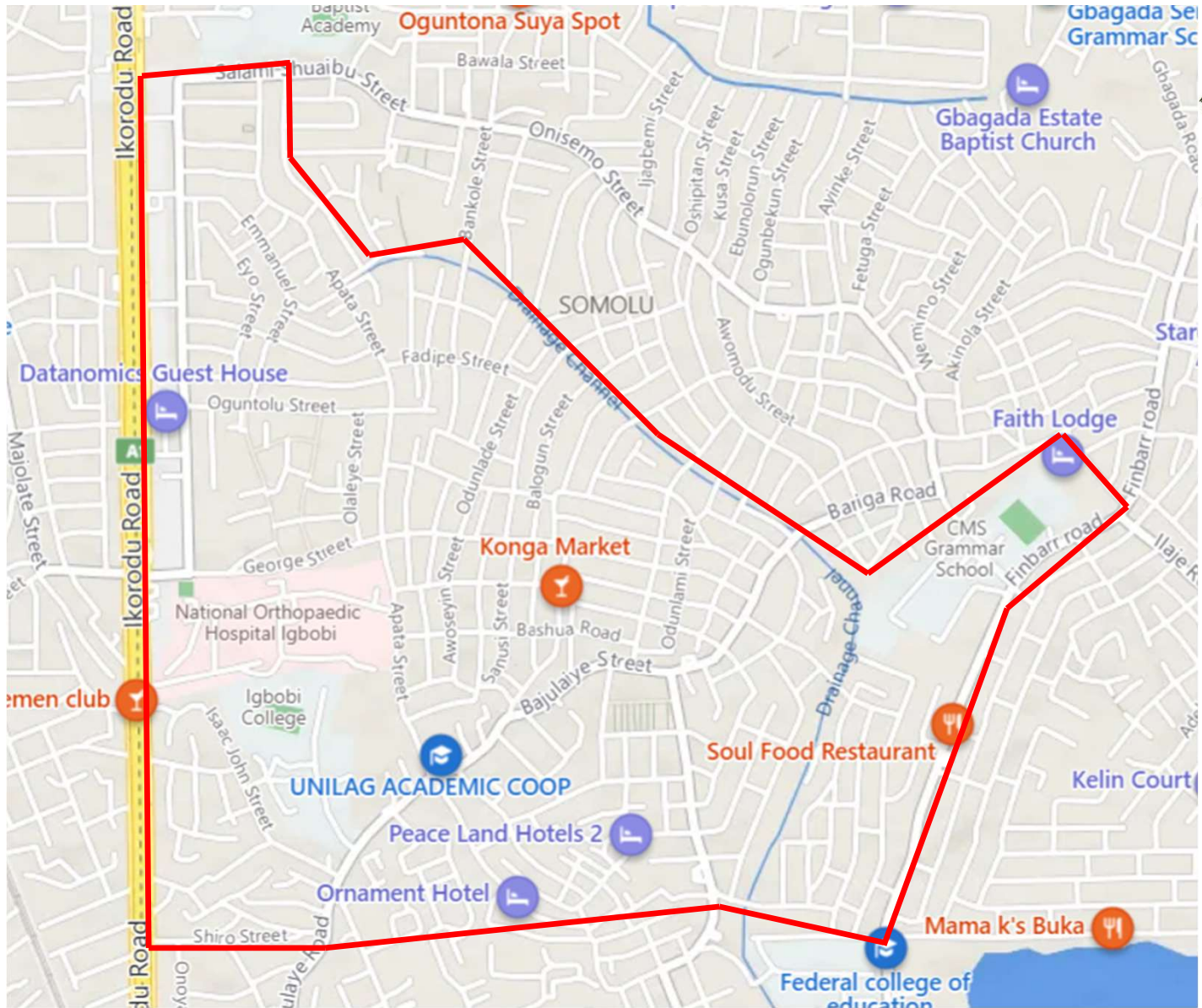
SEPTEMBER 2022

COVERAGE AREA

- The coverage area is the whole of Somolu lcda Lagos. Somolu District is bounded on the east by Ikorodu road, on the north and west side by Bariga lcda and on the south by Yaba lcda.



COVERAGE AREA MAP





LIST OF STREETS

SOMOLU DISTRICT HAS ABOUT 160 STREETS RECORDED.

- FAKUNLE STREET, SOMOLU, LAGOS.
- OPERE STREET, SOMOLU, LAGOS
- APATA STREET, SOMOLU, LAGOS
- OLU AJISEGBEDE STREET, SOMOLU, LAGOS
- HENRY ADIGWE CLOSE, SOMOLU.
- BOLAJI OMUPO STREET, SOMOLU.
- ADUROSAKIN STREET, OFF APATA ROAD, LAGOS.
- SHIRO STREET, SOMOLU, LAGOS.
- SHIPEOPLU STREET, SOMOLU, LAGOS.
- MORROCO ROAD, SOMOLU, LAGOS.
- ANIMASHAUN STREET, AKOKA , SOMOLU, LAGOS.
- DAILEY STREET, SOMOLU, LAGOS.
- ABIODUN STREET, SOMOLU, LAGOS.
- FAKOREDE STREET, SOMOLU, LAGOS.
- ISAAC JOHN STREET, SOMOLU, LAGOS.
- ADEBIYI STREET, SOMOLU, LAGOS
- ALH. CALFO STREET, SOMOLU, LAGOS.
- BOLYE STREET, SOMOLU, LAGOS.
- WATCH TOWER AVENUE, SOMOLU, LAGOS.
- SHODEKE STREET, SOMOLU, LAGOS.
- MARKET ROAD, SOMOLU, LAGOS.
- GEORGE STREET, SOMOLU, LAGOS.
- OGUNTOLU STREET, SOMOLU, LAGOS
- OWEH STREET, SOMOLU, LAGOS.





LIST OF STREETS

- TOPE KUTI CLOSE, SOMOLU, LAGOS.
- SANUSI STREET, SOMOLU, LAGOS
- ALAKIJA STREET, SOMOLU, LAGOS.
- ANUOLUWAPO STREET, SOMOLU, LAGOS.
- AKEJU STREET, SOMOLU, LAGOS.
- AGUNBLADE STREET, SOMOLU, LAGOS.
- AIYEPE STREET, SOMOLU, LAGOS.
- ARAROMI STREET, SOMOLU, LAGOS.
- AWOSEYIN STREET, SOMOLU, LAGOS.
- AKANNI BASHUA, SOMOLU, LAGOS.
- OKESUNA STREET, SOMOLU, LAGOS.
- OYEBAJO STREET, SOMOLU, LAGOS.
- AKINSOJI STREET, SOMOLU, LAGOS.
- DUROSIMI STREET, SOMOLU, LAGOS.
- FOLA AGORO STREET, SOMOLU, LAGOS.
- ADEKOJA STREET, SOMOLU, LAGOS
- BAJULAYE ROAD, SOMOLU, LAGOS.
- KALEJAIYE STREET, SOMOLU, LAGOS
- MAFOWOKU STREET, SOMOLU, LAGOS.
- TANIMOWO STREET, SOMOLU, LAGOS.
- ANIFOWOSE STREET, SOMOLU, LAGOS.
- BALOGUN STREET, SOMOLU, LAGOS
- ODUNLADE STREET, SOMOLU, LAGOS
- ODUMUYIWA STREET, SOMOLU, LAGOS,
- ONAYADE STREET, SOMOLU, LAGOS





LIST OF STREETS

- BAILEY CLOSE, SOMOLU, LAGOS.
- BAILEY STREET, SOMOLU LAGOS.
- BAILEY LANE, SOMOLU, LAGOS.
- AWE CRESCENT, SOMOLU, LAGOS.
- GBADAMOSI STREET, SOMOLU, LAGOS.
- IGBOBI COLLEGE ROAD, SOMOLU, LAGOS.
- OKUJOBI STREET, SOMOLU, LAGOS.
- FOLAMI STREET, SOMOLU, LAGOS.
- HUMANI STREET, SOMOLU, LAGOS.
- JABITA CLOSE, SOMOLU, LAGOS.
- ISREAL OYEKAN STREET, SOMOLU, LAGOS.
- OLORUNSOGO STREET, SOMOLU, LAGOS.
- OLADEHINDE STREET, SOMOLU, LAGOS.
- HAASTRUP AJIMOKO CLOSE, SOMOLU, LAGOS.
- ADEOLA STREET, SOMOLU, LAGOS.
- DABIRA STREET, SOMOLU, LAGOS.
- RUFAI STREET, SOMOLU, LAGOS.
- FADIPE STREET, SOMOLU, LAGOS.
- OLABIRAN STREET, SOMOLU, LAGOS.
- EYIOWUAWI STREET, SOMOLU, LAGOS.
- ABIOLA SARUMI STREET, SOMOLU, LAGOS.
- FAGBEYIRO STREET, SOMOLU, LAGOS.
- SALAMI STREET, SOMOLU, LAGOS.
- ODUNBANJO STREET, SOMOLU, LAGOS.
- AJOSE STREET, SOMOLU, LAGOS.
- EFON ALAYE STREET, SOMOLU, LAGOS.





LIST OF STREETS

- HASSAN BAKARE STREET, SOMOLU, LAGOS.
- MOSHOLASHI STREET, SOMOLU, LAGOS
- SHOBANDE STREET, SOMOLU, LAGOS.
- AKINRILO STREET, SOMOLU, LAGOS.
- OJO STREET, AKOKA, SOMOLU, LAGOS.
- ADETAYO OSHO STREET, SOMOLU, LAGOS.
- ADETORO JOHN, STREET, SOMOLU, LAGOS.
- ADENEKAN STREET, SOMOLU, LAGOS.
- SHOLANKE STREET, SOMOLU, LAGOS.
- IBUKUNOLU STREET, SOMOLU, LAGOS
- CELESTIAL AVENUE, SOMOLU, STREET, LAGOS.
- ESANOBOGUN STREET, SOMOLU, LAGOS
- FALOLA LANE, SOMOLU, LAGOS.
- SHODIMU STREET, SOMOLU, LAGOS
- ARIYO CRESENT, SOMOLU, LAGOS.
- ALADE STREET, SOMOLU, LAGOS.
- OLUWALOGBON STREET, SOMOLU, LAGOS.
- AYOADE STREET, SOMOLU, LAGOS.
- IKIJA STREET, SOMOLU, LAGOS.
- BABAYEMI STREET, SOMOLU, LAGOS.
- LISABI STREET, SOMOLU, LAGOS.
- AKANNI STREET, SOMOLU, LAGOS.
- ABIMBOLA STREET, SOMOLU, LAGOS.
- AWOSEYIN STREET, SOMOLU, LAGOS.
- CRAIG STREET, SOMOLU, LAGOS.
- ODUNLAMI STREET, SOMOLU, LAGOS.
- OLALEYE STREET, SOMOLU, LAGOS.
- PARTY STREET, SOMOLU, LAGOS.





LIST OF STREETS

- ARILE SHOMOLU STREET, SOMOLU, LAGOS.
- AGBALAJA STREET, SOMOLU, LAGOS.
- AKANNI BASHORUN STREET, SOMOLU, LAGOS.
- DURO STREET, SOMOLU, LAGOS.
- OGUNBADEJO STREET, SOMOLU, LAGOS.
- DUROJAIYE STREET, SOMOLU, LAGOS.
- WRIGHT STREET, SOMOLU, LAGOS.
- ADEDOYIN STREET, SOMOLU, LAGOS.
- AWOFESO STREET, SOMOLU, LAGOS.
- SUNDAY STREET, SOMOLU, LAGOS.
- LATUNDE LABINJO AVENUE, SOMOLU, LAGOS.
- OGUNNAIKE STREET, SOMOLU, LAGOS.
- ALBERT STREET, SOMOLU, LAGOS.
- IBIYEMI STREET, SOMOLU, LAGOS.
- EMMANUEL STREET, SOMOLU, LAGOS.
- EYO STREET, SOMOLU, STREET, LAGOS.
- NEW BALOGUN STREET, SOMOLU, LAGOS.
- OVIE NMHADA STREET, SOMOLU, LAGOS.
- OPELOYERU STREET, SOMOLU, LAGOS.
- IGE STREET, SOMOLU, LAGOS.
- ALH. SHERIFF AVENUE, SOMOLU, LAGOS.
- BAKARE AVENUE, SOMOLU, LAGOS.
- ALAUSA STREET, SOMOLU, LAGOS.
- ABEOKUTA STREET, SOMOLU, LAGOS.
- RUFAI STREET, SOMOLU, LAGOS.
- AKINSAYA STREET, SOMOLU, LAGOS.
- SALAMI SAIBU STREET, SOMOLU, LAGOS.





LIST OF STREETS

- OBIWUMI STREET, SOMOLU, LAGOS.
- CHURCH STREET, SOMOLU, LAGOS.
- OREDOLA STREET, SOMOLU, LAGOS.
- FEMI ADEBULE STREET, SOMOLU, LAGOS.
- MODUPE CRESECENT, SOMOLU, LAGOS.
- FATAI KADIRI STREET, SOMOLU, LAGOS.
- MODUPE OLUKOYA STREET, SOMOLU, LAGOS.
- OLUWADARE STREET, SOMOLU, LAGOS.
- OWOLABI BALOGUN STREET, SOMOLU, LAGOS.
- IYANDA BASHUA CLOSE, SOMOLU, LAGOS
- GEORGE ALADE STREET, SOMOLU, LAGOS.
- JEMILUGBA LANE, SOMOLU, LAGOS.
- OKUYIGA STREET, SOMOLU, LAGOS.
- BASHUA ROAD, SOMOLU, LAGOS.
- PETI DAHO STREET, SOMOLU, LAGOS.
- BASHUA STREET, SOMOLU, LAGOS.
- VINCENT STREET, SOMOLU, LAGOS.
- TOLA ODUNTAN STREET, SOMOLU, LAGOS.
- ONAFOWOKAN STREET, SOMOLU, LAGOS.
- KOLAWOLE EMMANUEL STREET, SOMOLU, LAGOS.
- OYEPELE STREET, SOMOLU, LAGOS.
- OHEKENU STREET, SOMOLU, LAGOS.
- IMAGBON STREET, SOMOLU, LAGOS.
- OGATIMIRIN STREET, SOMOLU, LAGOS.
- ABUDULAHY STREET, SOMOLU, LAGOS.
- FADEYI STREET, SOMOLU, LAGOS.





LIST OF CHURCHES

SOMOLU DISTRICT HAS ABOUT 75 CHURCHES RECORDED.

- FIRST BAPTIST CHURCH SHOMOLU
- HOGAC MINISTRIES
- FOR SQUARE GOSPEL CHURCH
- CHRIST FAITHFUL CHURCH
- METHODIST CHURCH SHOMOLU
- THE APOSTOLIC CHURCH
- ST. PETER & PAUL CATHOLIC CHURCH
- CHRIST APOSTOLIC CHURCH (OKE ISEGUN SOMOLU)
- DOMINION CITY SHOMOLU & FOUR SQUARE GOSPEL CHURCH
- AMAZING GRACE PENTECOSTAL CHURCH WORLDWIDE (SOLUTION GROUND)
- ECWA SHOMOLU
- THE REDEEMED CHRISTIAN CHURCH OF GOD
- CHRISTIAN FAITH CHURCH
- THE REDEEMED CHRISTIAN CHURCH OF GOD
- THE REDEEMED CHRISTIAN CHURCH OF GOD (SOLUTION CENTRE)
- THE REDEEMED CHRISTIAN CHURCH OF GOD (GRACE TABERNADE PARISH)
- THE REDEEMED CHRISTIAN CHURCH OF GOD (SOLUTION CENTRE)
- THE REDEEMED CHRISTIAN CHURCH OF GOD (GRACE TABERNADE PARISH)
- PERFECTED & PASSIONATE GOSPEL CHURCH
- MOUNTAIN OF FIRE AND MIRACLES MINISTRY LAGOS REGION 94
- MOUNTAIN OF FIRE AND MIRACLES MINISTRY
- EVANGELICAL CHURCH WINNING ALL
- THE NEW COVENANT CATHOLIC CHURCH
- LIGHT APOSTOLIC FAITH MISSION





LIST OF CHURCHES

- MOUNTAIN OF SUCCESS & COMFORT CHRIST MISSION
- HOUR OF DELIVERANCE C&S CHURCH OF CHRIST
- THE REDEMMEED CHRISTIAN CHURCH OF GOD
- METHODIST CHURCH
- THE FIRST AFRICAN CHURCH MISSION
- THE KINGS NATION CHURCH
- THE REDEMMEED CHRISTIAN CHURCH OF GOD (EBENZER PARISH)
- BIBLE FAITH TABERNADE
- THE REDEMMEED CHRISTIAN CHURCH OF GOD (LIVING HOPE PARISH)
- THE REDEMMEED CHRISTIAN CHURCH OF GOD (GREEN PASTURE ARENA)
- SAVIOURS MIRACLE ASSEMBLY
- THE REDEMMEED CHRISTIAN CHURCH OF GOD (THE KING PALACE PARISH)
- THE AFRICAN CHURCH EBENZER PARISH
- TREASURE LAND CHRISTIAN CHURCH (HOUSE OF GRACE)
- CHRISTIAN MISSION FOR THE DEAF CHURCH
- OMNISCIENT FALL GOSPEL MINISTRIES
- THE SALVATION ARMY
- THE NEW KINGDOM CHURCH OF THE LORD
- THE REDEEMED CHRISTIAN CHURCH OF GOD
- THE REDEEMED CHRISTIAN CHURCH OF GOD (IS ALIVE CHAPEL)
- THE REDEEMED CHRISTIAN CHURCH OF GOD (ROYAL CHAPEL ARENA)
- THE PENTECOSTAL CHURCH OF CHRIST



LIST OF CHURCHES

- ONIYO STREET, SOMOLU, LAGOS.
- SHOYINKA STREET, SOMOLU, LAGOS.
- SHONTAN STREET, SOMOLU, LAGOS.
- IGBOBI SABE STREET, SOMOLU, LAGOS.
- IJAOYE STREET, SOMOLU, LAGOS.
- LAWAL STREET, SOMOLU, LAGOS.





LIST OF CHURCHES

- THE REDEEMED CHRISTIAN CHURCH OF GOD (HOUSEHOLD OF JOY PARISH)
- THE REDEEMED CHRISTIAN CHURCH OF GOD (FAITH CENTER PARISH)
- MORROCO PARISH
- ALL SAINTS PENTECOSTAL CHURCH
- HOUSE OF BLISS INTERNATIONAL CHURCH
- THE LORD CHOSEN CHARISMATIC REVIVAL MOVEMENT
- THE REDEEMED CHRISTIAN CHURCH OF GOD (WORD OF LIFE PARISH)
- NEW HERITAGE BAPTIST CHURCH
- BEULA OKE IGBALA
- THE REDEEMED CHRISTIAN CHURCH OF GOD (HOUSE OF PRAYER FOR ALL NATIONS)
- THE PRESENT TRUTH MINISTRY
- TOTAL GOSPEL BIBLE CHURCH INC.
- THE REDEEMED CHRISTIAN CHURCH OF GOD (CHAPEL OF GRACE)
- THE APOSTOLIC CHURCH NIGERIA AKOKA DISTRICT
- CHRIST GOSPEL APOSTOLIC CHURCH
- THE REDEEMED CHRISTIAN CHURCH OF GOD (VICTORY HOUSE)
- FOURSQUARE GOSPEL CHURCH
- THE REDEEMED CHRISTIAN CHURCH OF GOD (THE HOUSE OF HIS PRESENCE)
- THE PROPHETIC CHURCH OF NIGERIA OVERSEAS
- HOLY CROSS REDEMPTION
- THE REDEEMED CHRISTIAN CHURCH (CORNER STONE ASSEMBLY ZONE)
- TRUIMPHANT POWER



LIST OF CHURCHES

- SAINT MARK CHURCH OF CHRIST
- THE REDEEMED CHRISTIAN CHURCH OF GOD (FOUNTAIN OF LIVING WATER PARISH)
- FRCM ALADURA
- METHODIST CHURCH NIG.
- EVERLASTING ROCK APOSTOLIC CHURCH
- THE REDEEMED CHRISTIAN CHURCH OF GOD (SOLUTION PARISH)





LIST OF MOSQUES

SOMOLU DISTRICT HAS ABOUT 23 MOSQUES RECORDED.

- OLORUNKEMI MOSQUE
- SHOMOLU CENTRAL MOSQUE
- IGBEHIN ADUN MOSQUE
- MOSQUE
- MOSQUE
- ALUBARIKA MOSQUE
- AL-MUNAWWARAH INTERNATIONAL SCHOOL
- IBUKUNOLUWA MOSQUE
- TAWAKALITU ALI COMMUNITY MOSQUE
- ISTIJABAH DUA MOSQUE
- AL - BARKA CENTRAL MOSQUE
- TAWAKALITU MOSQUE
- ARAROMI MOSQUE
- IDERA MOSQUE
- MOSQUE
- IFEDAYO MOSQUE
- IBUKUNOLUWA CENTRAL MOSQUE
- RIDWANULLAHI MOSQUE
- SANUSI CENTRAL MOSQUE
- IBADURAHMAN MOSQUE
- AKOKA CENTRAL MOSQUE
- OLORUNTOSIN MOSQUE
- FADL - I - OMAR ISLAMIC MOSQUE





CHURCHES

IN SOMOLU DISTRICT

SOMOLU DISTRICT HAS ABOUT 75 CHURCHES RECORDED.



FIRST BAPTIST CHURCH



- **LOCATION:** 2, AGUNBLADE STREET, OFF OGUNTOLU STREET, SOMOLU.
- **NO OF FLOORS:** 2 FLOORS
- **PURPOSE BUILT:** YES
- **APPROVAL STATUS:** UNKNOWN
- **ADJOURNING DEVELOPMENTS:** RESIDENTIAL



FOUR SQUARE GOSPEL CHURCH



- **LOCATION:** 40, BAJULAYE ROAD, SOMOLU.
- **NO OF FLOORS:** 3 FLOORS
- **STATUS:** IN-USE
- **PURPOSE BUILT:** YES
- **APPROVAL STATUS:** UNKNOWN
- **ADJOURNING DEVELOPMENTS:** RESIDENTIAL



METHODIST CHURCH



Network: Sep 14, 2022 12:51:30 PM GMT+01:00
Local: Sep 14, 2022 12:51:28 PM GMT+01:00

- **LOCATION:** FAKOREDE STREET, SOMOLU.
- **NO OF FLOORS:** 3 FLOORS
- **STATUS:** IN-USE
- **PURPOSE BUILT:** YES
- **APPROVAL STATUS:** UNKNOWN
- **ADJOURNING DEVELOPMENTS:** RESIDENTIAL



Network: Sep 14, 2022 12:51:14 PM G
Local: Sep 14, 2022 12:51:12 PM G



Network: Sep 14, 2022 12:51:39 PM GMT+01:00
Local: Sep 14, 2022 12:51:37 PM GMT+01:00



ST. PETER & PAUL CATHOLIC CHURCH



- **LOCATION:** ABEOKUTAO STREET, OFF SHIPEOLU, SOMOLU.
- **NO OF FLOORS:** 2 FLOORS
- **STATUS:** IN-USE
- **PURPOSE BUILT:** YES
- **APPROVAL STATUS:** UNKNOWN
- **ADJOURNING DEVELOPMENTS:** RESIDENTIAL



DOMINION CITY CHURCH



- **LOCATION:** 75, SHIPEOLU STREET, BAKARE BUSSTOP, SOMOLU.
- **NO OF FLOORS:** 4 FLOORS
- **STATUS:** IN-USE
- **PURPOSE BUILT:** NO
- **APPROVAL STATUS:** UNKNOWN
- **ADJOURNING DEVELOPMENTS:** COMMERCIAL / PLACE OF WORSHIP



ECWA SHOMOLU



- **LOCATION:** ALFA AMINU STREET, OFF BOLAJI OMUPO STREET, SOMOLU.
- **NO OF FLOORS:** 1 FLOOR
- **STATUS:** IN-USE
- **PURPOSE BUILT:** YES
- **APPROVAL STATUS:** NILL
- **ADJOURNING DEVELOPMENTS:** RESIDENTIAL



CHRISTIAN FAITH CHURCH



- **LOCATION:** 109, APATA STREET, SOMOLU.
- **NO OF FLOORS:** 1 FLOOR
- **STATUS:** IN-USE
- **PURPOSE BUILT:** YES
- **APPROVAL STATUS:** NILL
- **ADJOURNING DEVELOPMENTS:** RESIDENTIAL



RCCG (KING'S NEW SONG PARISH)



- **LOCATION:** CORNERPIECE BOLAJI OMUPO AND DAPO FAFIADÉ STREET, SOMOLU.
- **NO OF FLOORS:** 2 FLOORS
- **STATUS:** IN-USE
- **PURPOSE BUILT:** NO
- **APPROVAL STATUS:** NILL
- **ADJOURNING DEVELOPMENTS:** RESIDENTIAL



MOUNTAIN OF FIRE AND MIRACLES MINISTRY



- **LOCATION:** 16, BOLAJI OMUPO STREET, SOMOLU.
- **NO OF FLOORS:** 4 FLOORS
- **STATUS:** IN-USE
- **PURPOSE BUILT:** YES
- **APPROVAL STATUS:** UNKNOWN
- **ADJOURNING DEVELOPMENTS:** RESIDENTIAL



PERFECTED & PASSIONATE GOSPEL CHURCH



- **LOCATION:** 10, ALFA AMINU STREET, OFF PEDRO ROAD, SOMOLU.
- **NO OF FLOORS:** 2 FLOORS
- **STATUS:** IN-USE
- **PURPOSE BUILT:** YES
- **APPROVAL STATUS:** IN-USE
- **ADJOURNING DEVELOPMENTS:** RESIDENTIAL



EVANGELICAL CHURCH WINNING ALL



Network: Sep 14, 2022 10:47:57 AM GMT+01:00
Local: Sep 14, 2022 10:47:56 AM GMT+01:00



Network: Sep 14, 2022 10:47:45 AM GMT+01:00
Local: Sep 14, 2022 10:47:44 AM GMT+01:00



Network: Sep 14, 2022 10:49:25 AM GMT+01:00
Local: Sep 14, 2022 10:49:23 AM GMT+01:00

- **LOCATION:** 1, ECWA CRESCENT, OFF ALFA AMINU STREET, SOMOLU.
- **NO OF FLOORS:** 1 FLOOR
- **STATUS:** IN-USE
- **PURPOSE BUILT:** YES
- **APPROVAL STATUS:** NILL
- **ADJOURNING DEVELOPMENTS:** RESIDENTIAL



THE NEW COVENANT CATHOLIC CHURCH



- **LOCATION:** 2, ECWA CRESCENT, OFF OKULAJA STREET, SOMOLU.
- **NO OF FLOORS:** 1 FLOOR
- **STATUS:** IN-USE
- **PURPOSE BUILT:** YES
- **APPROVAL STATUS:** UNKNOWN
- **ADJOURNING DEVELOPMENTS:** RESIDENTIAL





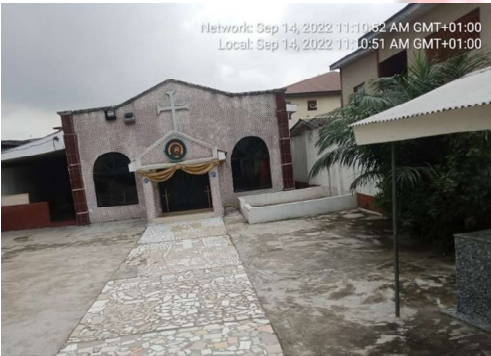
LIGHT APOSTOLIC FAITH MISSION



- **LOCATION:** 38, BOLAJI OMUPO STREET, SOMOLU.
- **NO OF FLOORS:** 3 FLOORS (CHURCH ON THE GROUND FLOOR)
- **STATUS:** HIGHLY DISTRESSED, IN-USE
- **PURPOSE BUILT:** NO
- **APPROVAL STATUS:** NIL
- **ADJOURNING DEVELOPMENTS:** RESIDENTIAL



HOGAC MINISTRIES



- **LOCATION:** 7, BOLAJI OMUPO STREET, SOMOLU.
- **NO OF FLOORS:** 1 FLOOR
- **STATUS:** IN-USE
- **PURPOSE BUILT:** YES
- **APPROVAL STATUS:** UNKNOWN
- **ADJOURNING DEVELOPMENTS:** RESIDENTIAL



CHRIST FAITHFUL CHURCH



- **LOCATION:** 4, ALH. SHERIFF AVENUE, OFF BOLAJI OMUPO STREET, SOMOLU.
- **NO OF FLOORS:** 2 FLOORS
- **STATUS:** IN-USE
- **PURPOSE BUILT:** YES
- **APPROVAL STATUS:** UNKNOWN
- **ADJOURNING DEVELOPMENTS:** RESIDENTIAL



THE APOSTOLIC CHURCH



Network: Sep 14, 2022 11:23:51 AM GMT+01:00
Local: Sep 14, 2022 11:23:50 AM GMT+01:00

- **LOCATION:** 8B, OLU AJISEGBEDE STREET, OFF APATA STREET, SOMOLU.
- **NO OF FLOORS:** 3 FLOORS
- **STATUS:** IN-USE
- **PURPOSE BUILT:** YES
- **APPROVAL STATUS:** UNKNOWN
- **ADJOURNING DEVELOPMENTS:** RESIDENTIAL



Network: Sep 14, 2022 11:23:34 AM GMT+01:00
Local: Sep 14, 2022 11:23:33 AM GMT+01:00



Network: Sep 14, 2022 11:23:11 AM GMT+01:00
Local: Sep 14, 2022 11:23:09 AM GMT+01:00



Network: Sep 14, 2022 11:23:47 AM GMT+01:00
Local: Sep 14, 2022 11:23:45 AM GMT+01:00



CHRIST APOSTOLIC CHURCH (OKE ISEGUN SOMOLU)



- **LOCATION:** 11, OLU AJISEGBEDE STREET, OFF APATA STREET, SOMOLU.
- **NO OF FLOORS:** 1 FLOOR
- **STATUS:** IN-USE
- **PURPOSE BUILT:** YES
- **APPROVAL STATUS:** UNKNOWN
- **ADJOURNING DEVELOPMENTS:** RESIDETIAL



AMAZING GRACE PENTECOSTAL CHURCH WORLDWIDE



- **LOCATION:** 1, BAKARE AVENUE, PALMGROVE, SOMOLU.
- **NO OF FLOORS:** 1 FLOOR
- **STATUS:** IN-USE
- **PURPOSE BUILT:** YES
- **APPROVAL STATUS:** UNKNOWN
- **ADJOURNING DEVELOPMENTS:** RESIDENTIAL



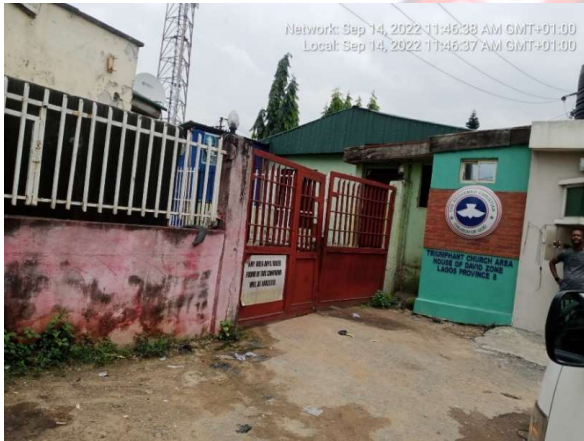
RCCG (CITY OF ZION)



- **LOCATION:** 94, SHIPEOLU STREET, PALMGROVE, SOMOLU.
- **NO OF FLOORS:** 1 FLOOR
- **STATUS:** IN-USE
- **PURPOSE BUILT:** YES
- **APPROVAL STATUS:** UNKNOWN
- **ADJOURNING DEVELOPMENTS:** RESIDENTIAL



RCCG (HOUSE OF DAVID)



- **LOCATION:** 91A, SHIPEOLU STREET, PALMGROVE, SOMOLU.
- **NO OF FLOORS:** 1 FLOOR
- **STATUS:** IN-USE
- **PURPOSE BUILT:** YES
- **APPROVAL STATUS:** NIL
- **ADJOURNING DEVELOPMENTS:** RESIDENTIAL



RCCG (SOLUTION CENTRE)



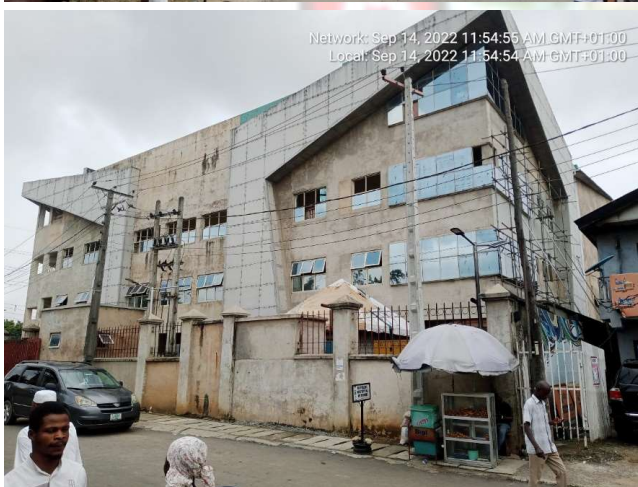
- **LOCATION:** TANTALIZERS BUILDING. 63, SHIPEOLU STREET, PALMGROVE, SOMOLU.
- **NO OF FLOORS:** 2 FLOORS
- **STATUS:** IN-USE
- **PURPOSE BUILT:** NO
- **APPROVAL STATUS:** UNKNOWN
- **ADJOURNING DEVELOPMENTS:** COMMERCIAL



RCCG (GRACE TABERNACLE)



- **LOCATION:** ALONG SUNDAY STREET, OFF IKORODU ROAD, PALMGROVE, SOMOLU.
- **NO OF FLOORS:** 4 FLOORS
- **STATUS:** IN-USE (FININSHING)
- **PURPOSE BUILT:** YES
- **APPROVAL STATUS:** YES
- **ADJOURNING DEVELOPMENTS:** COMMERCIAL



MOUNTAIN OF FIRE AND MIRACLES MINISTRY



Network: Sep 14, 2022 12:34:45 PM GMT+01:00
Local: Sep 14, 2022 12:34:43 PM GMT+01:00



Network: Sep 14, 2022 12:34:22 PM GMT+01:00
Local: Sep 14, 2022 12:34:21 PM GMT+01:00

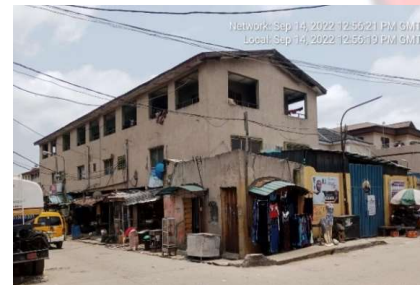
- **LOCATION:** 24, SANUSI STREET, SOMOLU.
- **NO OF FLOORS:** 4 FLOORS
- **STATUS:** IN-USE
- **PURPOSE BUILT:** YES
- **APPROVAL STATUS:** UNKNOWN
- **ADJOURNING DEVELOPMENTS:** RESIDENTIAL



Network: Sep 14, 2022 12:34:52 PM GMT+01:00
Local: Sep 14, 2022 12:34:51 PM GMT+01:00



MOUNTAIN OF FIRE AND MIRACLES MINISTRY



- **LOCATION:** 22, ABIODUN STREET, SOMOLU.
- **NO OF FLOORS:** 3 FLOORS (CHURCH ON GROUND FLOOR SPACE)
- **STATUS:** IN-USE (DISTRESSED)
- **PURPOSE BUILT:** NO
- **APPROVAL STATUS:** UNKNOWN
- **ADJOURNING DEVELOPMENTS:** RESIDENTIAL



*MOUNTAIN OF SUCCES AND COMFORT CHRIST MINISTRY

*HOUR OF DELIVERANCE C&S CHURCH OF CHRIST

*RCCG (LIGHT HOUSE PARISH)



- **LOCATION:** 27, OKUJOBI STREET, OFF BAJULAYE ROAD, SOMOLU.
- **NO OF FLOORS:** 3 FLOORS (CHURCHES ON GROUND FLOOR)
- **STATUS:** IN-USE (DISTRESSED)
- **PURPOSE BUILT:** NO
- **APPROVAL STATUS:** NILL
- **ADJOURNING DEVELOPMENTS:** RESIDENTIAL



METHODIST CHURCH



- **LOCATION:** 14, FOLAMI STREET, OFF ABIODUN STREET, SOMOLU.
- **NO OF FLOORS:** 3 FLOORS
- **STATUS:** IN-USE
- **PURPOSE BUILT:** YES
- **APPROVAL STATUS:** UNKNOWN
- **ADJOURNING DEVELOPMENTS:** RESIDENTIAL





METHODIST CHURCH

- **LOCATION:** 8, ODUNLAMI STREET, OFF ESANOBOGUN STREET, SOMOLU.
- **NO OF FLOORS:** 2 FLOORS
- **STATUS:** IN-USE
- **PURPOSE BUILT:** YES
- **APPROVAL STATUS:** UNKNOWN
- **ADJOURNING DEVELOPMENTS:** RESIDENTIAL





THE KINGS NATION CHURCH

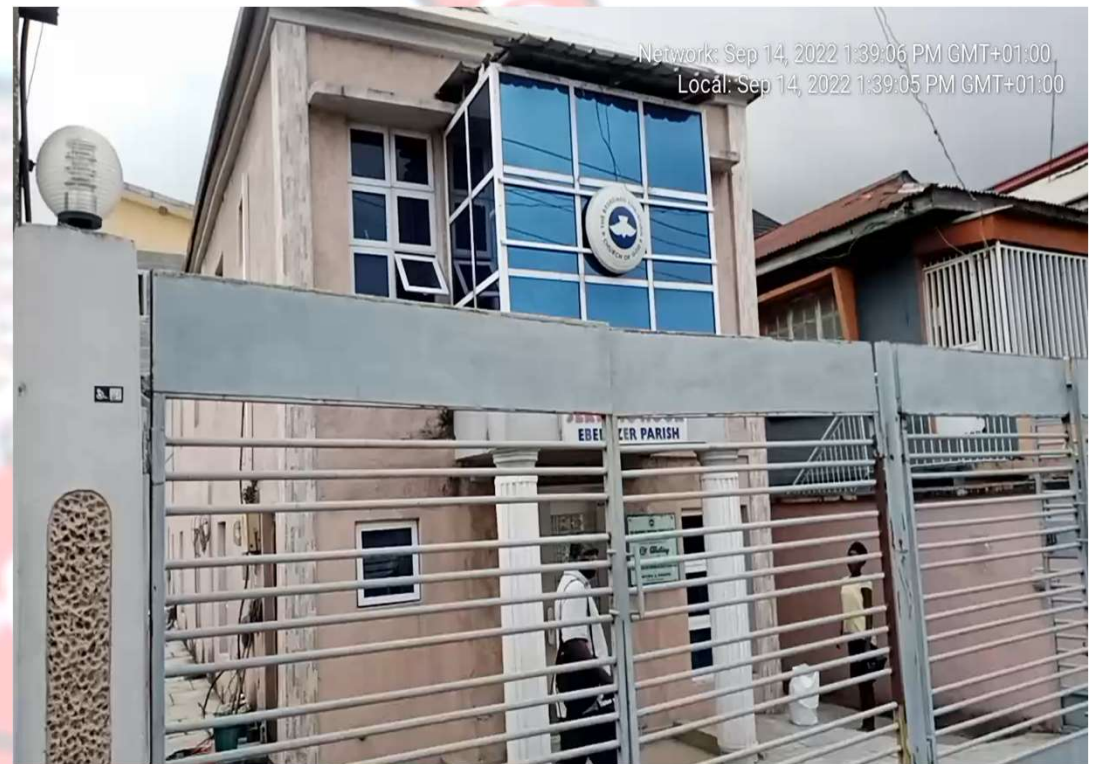
- **LOCATION:** 50, BAJULAYE ROAD, FOLA AGORO JUNCTION, SOMOLU.
- **NO OF FLOORS:** 2 FLOORS
- **STATUS:** IN-USE
- **PURPOSE BUILT:** NO
- **APPROVAL STATUS:** UNKOWN
- **ADJOURNING DEVELOPMENTS:** RESIDENTIAL





RCCG (EBENEZER PARISH)

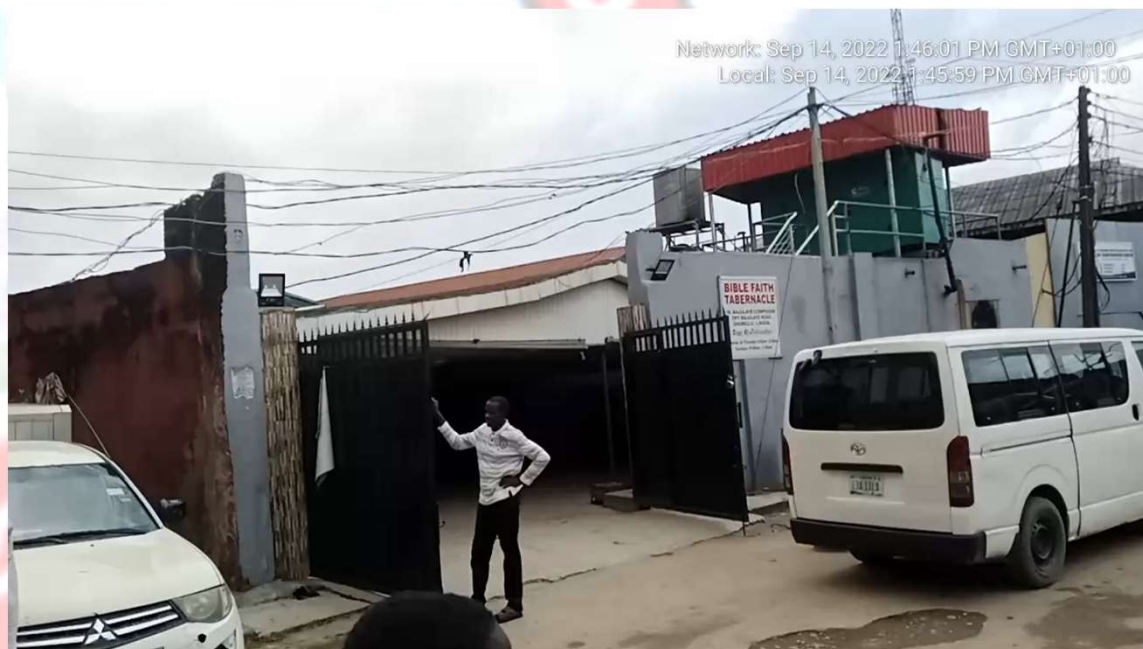
- **LOCATION:** 99, BAJULAYE ROAD, SOMOLU.
- **NO OF FLOORS:** 2 FLOORS
- **STATUS:** IN-USE
- **PURPOSE BUILT:** YES
- **APPROVAL STATUS:** NILL
- **ADJOURNING DEVELOPMENTS:** RESIDENTIAL





BIBLE FAITH TABERNACLE

- **LOCATION:** 30, BAJULAYE COMPOUND, BAJULAYE ROAD, SOMOLU.
- **NO OF FLOORS:** 1 FLOOR
- **STATUS:** IN-USE
- **PURPOSE BUILT:** YES
- **APPROVAL STATUS:** NILL
- **ADJOURNING DEVELOPMENTS:** RESIDENTIAL





RCCG (LIVING HOPE PARISH)

- **LOCATION:** 47A, MARKET STREET, OFF BAJULAYE ROAD, SOMOLU.
- **NO OF FLOORS:** 3 FLOORS
- **STATUS:** IN-USE
- **PURPOSE BUILT:** NILL
- **APPROVAL STATUS:** UNKNOWN
- **ADJOURNING DEVELOPMENTS:** RESIDENTIAL



Network: Sep 14, 2022 2:15:47 PM GMT+01:00
Local: Sep 14, 2022 2:15:48 PM GMT+01:00





RCCG (GREEN PASTURE ARENA)

- **LOCATION:** 33, MARKET STREET, OFF BAJULAYE ROAD, SOMOLU.
- **NO OF FLOORS:** 3 FLOORS
- **STATUS:** IN-USE
- **PURPOSE BUILT:** YES
- **APPROVAL STATUS:** UNKNOWN
- **ADJOURNING DEVELOPMENTS:** RESIDENTIAL





SAVIOURS MIRACLE ASSEMBLY

- **LOCATION:** 12, EFON ALAYE STREET, OFF ODUNLADE STREET, SOMOLU.
- **NO OF FLOORS:** 1 FLOOR
- **STATUS:** IN-USE
- **PURPOSE BUILT:** YES
- **APPROVAL STATUS:** NILL
- **ADJOURNING DEVELOPMENTS:** RESIDENTIAL





RCCG (THE KING PALACE PARISH)

- **LOCATION:** 14, EFON ALAYE STREET, OFF ODUNLADE STREET, SOMOLU.
- **NO OF FLOORS:** 1 FLOOR
- **STATUS:** IN-USE
- **PURPOSE BUILT:** NO
- **APPROVAL STATUS:** NILL
- **ADJOURNING DEVELOPMENTS:** RESIDENTIAL





THE AFRICAN CHURCH (EBENEZER PARISH)

- **LOCATION:** 87/89, APATA STREET, SOMOLU.
- **NO OF FLOORS:** 2 FLOORS
- **STATUS:** IN-USE
- **PURPOSE BUILT:** YES
- **APPROVAL STATUS:** UNKNOWN
- **ADJOURNING DEVELOPMENTS:** RESIDENTIAL



TREASURE LAND CHRISTIAN CHURCH



- **LOCATION:** 42, SHODIMU STREET, SOMOLU.
- **NO OF FLOORS:** 1 FLOOR
- **STATUS:** IN-USE
- **PURPOSE BUILT:** YES
- **APPROVAL STATUS:** NILL
- **ADJOURNING DEVELOPMENTS:** RESIDENTIAL



CHRISTIAN MISSION FOR THE DEAF CHURCH



- **LOCATION:** 106, APATA STREET, SOMOLU.
- **NO OF FLOORS:** 3 FLOORS
- **STATUS:** IN-USE
- **PURPOSE BUILT:** YES
- **APPROVAL STATUS:** UNKOWN
- **ADJOURNING DEVELOPMENTS:** RESIDENTIAL



OMNISCIENT FALL GOSPEL MINISTRIES

- **LOCATION:** 104, APATA STREET, SOMOLU.
- **NO OF FLOORS:** 3 FLOORS
- **STATUS:** IN-USE
- **PURPOSE BUILT:** NO
- **APPROVAL STATUS:** UNKNOWN
- **ADJOURNING DEVELOPMENTS:** RESIDENTIAL





HOLY GHOST CHRISTIAN CENTRE (SOLUTION ARENA)

- **LOCATION:** 156, IKORODU ROAD, SOMOLU.
- **NO OF FLOORS:** 2 FLOORS
- **STATUS:** IN-USE
- **PURPOSE BUILT:** YES
- **APPROVAL STATUS:** UNKNOWN
- **ADJOURNING DEVELOPMENTS:** COMMERCIAL





THE SALVATION ARMY

- **LOCATION:** 2B, SHIPEOLU, SOMOLU.
- **NO OF FLOORS:** 3 FLOORS
- **STATUS:** IN-USE
- **PURPOSE BUILT:** YES
- **APPROVAL STATUS:** UNKNOWN
- **ADJOURNING DEVELOPMENTS:** RESIDENTIAL





THE NEW KINGDOM CHURCH OF THE LORD

- **LOCATION:** 3, SHIPEOLU, SOMOLU.
- **NO OF FLOORS:** 3 FLOORS
- **STATUS:** IN-USE
- **PURPOSE BUILT:** NO
- **APPROVAL STATUS:** NILL
- **ADJOURNING DEVELOPMENTS:** RESIDENTIAL





RCCG (FOUNTAIN OF JOY)

- **LOCATION:** 51, ISAAC JOHN STREET, OFF FADEYI STREET, SOMOLU.
- **NO OF FLOORS:** 2 FLOORS
- **STATUS:** IN-USE
- **PURPOSE BUILT:** NO
- **APPROVAL STATUS:** NILL
- **ADJOURNING DEVELOPMENTS:** RESIDENTIAL





RCCG (IS ALIVE CHAPEL)

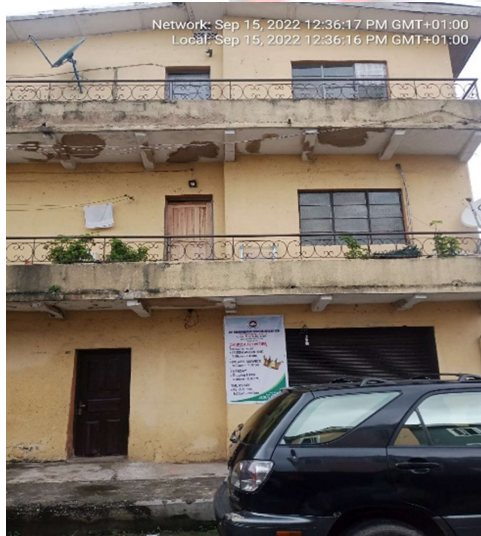
- **LOCATION:** 40, ISAAC JOHN STREET, OFF FADEYI STREET, SOMOLU.
- **NO OF FLOORS:** 1 FLOOR
- **STATUS:** IN-USE
- **PURPOSE BUILT:** NO
- **APPROVAL STATUS:** NILL
- **ADJOURNING DEVELOPMENTS:** RESIDENTIAL



RCCG (ROYAL CHAPEL ARENA)



- **LOCATION:** 4, ONIYO STREET, OFF FADEYI STREET, SOMOLU.
- **NO OF FLOORS:** 3 FLOORS
- **STATUS:** IN-USE
- **PURPOSE BUILT:** NO
- **APPROVAL STATUS:** NILL
- **ADJOURNING DEVELOPMENTS:** RESIDENTIAL



THE PENTECOSTAL CHURCH OF CHRIST



- **LOCATION:** 33, SHIRO STREET, OFF FADEYI STREET, SOMOLU.
- **NO OF FLOORS:** 1 FLOORS
- **STATUS:** IN-USE
- **PURPOSE BUILT:** NO
- **APPROVAL STATUS:** NILL
- **ADJOURNING DEVELOPMENTS:** RESIDENTIAL





RCCG (HOUSEHOLD OF JOY PARISH)

- **LOCATION:** 33, SHOYINKA / SHIRO STREET, OFF IGBOBI COLLEGE ROAD, SOMOLU.
- **NO OF FLOORS:** 3 FLOORS
- **STATUS:** IN-USE
- **PURPOSE BUILT:** NO
- **APPROVAL STATUS:** NILL
- **ADJOURNING DEVELOPMENTS:** RESIDENTIAL



RCCG (FAITH CENTER PARISH)

- **LOCATION:** 23, IGBOBI COLLEGE ROAD, SOMOLU.
- **NO OF FLOORS:** 1 FLOOR
- **STATUS:** IN-USE
- **PURPOSE BUILT:** NO
- **APPROVAL STATUS:** NILL
- **ADJOURNING DEVELOPMENTS:** RESIDENTIAL



MORROCO PARISH

- **LOCATION:** 2, OYEDELE CLOSE, OFF BAJULAYE ROAD, SOMOLU.
- **NO OF FLOORS:** 1 FLOOR
- **STATUS:** IN-USE
- **PURPOSE BUILT:** NO
- **APPROVAL STATUS:** NIL
- **ADJOURNING DEVELOPMENTS:** RESIDENTIAL



Network: Sep 15, 2022 1:01:34 PM GMT+01:00
Local: Sep 15, 2022 1:01:34 PM GMT+01:00
6°31'44.802"N 3°22'30.518"E
Shomolu
Lagos



Network: Sep 15, 2022 1:01:35 PM GMT+01:00
Local: Sep 15, 2022 1:01:34 PM GMT+01:00
6°31'44.802"N 3°22'30.506"E
Bashua Street
Shomolu
Lagos



Network: Sep 15, 2022 1:01:36 PM GMT+01:00
Local: Sep 15, 2022 1:01:36 PM GMT+01:00
6°31'44.802"N 3°22'30.606"E
Bashua Street
Shomolu
Lagos





ALL SAINTS PENTECOSTAL CHURCH

- **LOCATION:** 4, OYEDELE CLOSE, MOROCCO COMPOUND, SOMOLU.
- **NO OF FLOORS:** 1 FLOOR
- **STATUS:** IN-USE
- **PURPOSE BUILT:** NO
- **APPROVAL STATUS:** NILL
- **ADJOURNING DEVELOPMENTS:** RESIDENTIAL



HOUSE OF BLISS INTERNATIONAL CHURCH



- **LOCATION:** 5, OYEDELE CLOSE, MOROCCO COMPOUND, SOMOLU.
- **NO OF FLOORS:** 3 FLOORS
- **STATUS:** IN-USE
- **PURPOSE BUILT:** NO
- **APPROVAL STATUS:** NILL
- **ADJOURNING DEVELOPMENTS:** RESIDENTIAL





THE LORD CHOSEN CHARISMATIC REVIVAL MOVEMENT

- **LOCATION:** 1, ARIYO CRESCENT, BEHIND BASHUA POLICE STATION, SOMOLU.
- **NO OF FLOORS:** 1 FLOOR
- **STATUS:** IN-USE
- **PURPOSE BUILT:** NO
- **APPROVAL STATUS:** NILL
- **ADJOURNING DEVELOPMENTS:** RESIDENTIAL



RCCG (WORD OF LIFE PARISH)

- **LOCATION:** 5, ARIYO CRESCENT, SOMOLU.
- **NO OF FLOORS:** 1 FLOOR
- **STATUS:** IN-USE
- **PURPOSE BUILT:** NO
- **APPROVAL STATUS:** NILL
- **ADJOURNING DEVELOPMENTS:** RESIDENTIAL





NEW HERITAGE BAPTIST CHURCH

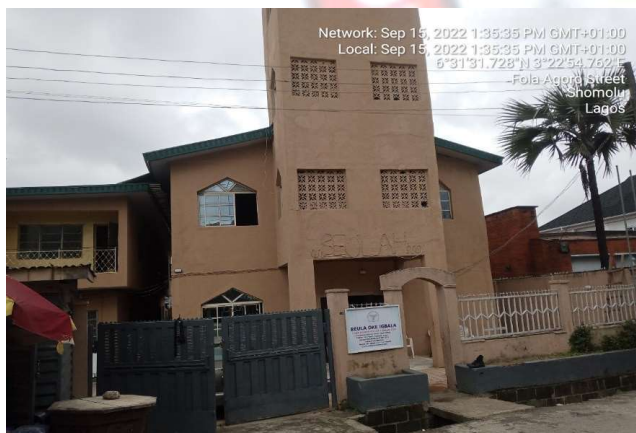
- **LOCATION:** 17/19, FEMI ADEBULE STREET, OFF FOLA AGORO ROAD, SOMOLU.
- **NO OF FLOORS:** 4 FLOORS
- **STATUS:** IN-USE
- **PURPOSE BUILT:** YES
- **APPROVAL STATUS:** UNKNOWN
- **ADJOURNING DEVELOPMENTS:** RESIDENTIAL





BEULA OKE IGBALA

- **LOCATION:** 47, MODUPE STREET, OANDO PETROL FILLING STATION, FOLA AGORO ROAD, SOMOLU.
- **NO OF FLOORS:** 3 FLOORS
- **STATUS:** IN-USE
- **PURPOSE BUILT:** YES
- **APPROVAL STATUS:** UNKNOWN
- **ADJOURNING DEVELOPMENTS:** RESIDENTIAL



RCCG (HOUSE OF PRAYER FOR ALL NATIONS)

- **LOCATION:** 31, ADEBAYO OSHO STREET, OFF FOLA AGORO ROAD, SOMOLU.
- **NO OF FLOORS:** 4 FLOORS
- **STATUS:** IN-USE
- **PURPOSE BUILT:** YES
- **APPROVAL STATUS:** IN-USE
- **ADJOURNING DEVELOPMENTS:**





THE PRESENT TRUTH MINISTRY

- **LOCATION:** 31, ADEBAYO OSHO STREET, OFF FOLA AGORO ROAD, SOMOLU.
- **NO OF FLOORS:** 4 FLOORS
- **STATUS:** IN-USE
- **PURPOSE BUILT:** YES
- **APPROVAL STATUS:** IN-USE
- **ADJOURNING DEVELOPMENTS:** RESIDENTIAL





TOTAL GOSPEL BIBLE CHURCH INC.

- **LOCATION:** 5, ONAFEKO STREET, OFF AYINKE STREET, SOMOLU.
- **NO OF FLOORS:** 3 FLOORS
- **STATUS:** IN-USE
- **PURPOSE BUILT:** YES
- **APPROVAL STATUS:** UNKNOWN
- **ADJOURNING DEVELOPMENTS:** RESIDENTIAL

Network: Sep 15, 2022 1:48:11 PM GMT+01:00
Local: Sep 15, 2022 1:48:10 PM GMT+01:00
6°31'30.648"N 3°23'1.152"E



Network: Sep 15, 2022 1:47:45 PM GMT+01:00
Local: Sep 15, 2022 1:47:45 PM GMT+01:00
6°31'30.408"N 3°23'1.128"E



Network: Sep 15, 2022 1:47:29 PM GMT+01:00
Local: Sep 15, 2022 1:47:29 PM GMT+01:00
6°31'30.516"N 3°23'1.184"E



RCCG (CHAPEL OF GRACE)

- **LOCATION:** ALONG ALONGE STREET, AKOKA, SOMOLU.
- **NO OF FLOORS:** 1 FLOOR
- **STATUS:** IN-USE
- **PURPOSE BUILT:** NO
- **APPROVAL STATUS:** NILL
- **ADJOURNING DEVELOPMENTS:** RESIDENTIAL





THE APOSTOLIC CHURCH NIGERIA AKOKA DISTRICT

- **LOCATION:** ALONG OSANYINPEJU STREET, AKOKA, SOMOLU.
- **NO OF FLOORS:** 3 FLOORS
- **STATUS:** IN-USE
- **PURPOSE BUILT:** YES
- **APPROVAL STATUS:** UNKNOWN
- **ADJOURNING DEVELOPMENTS:** RESIDENTIAL



CHRIST GOSPEL APOSTOLIC CHURCH



- **LOCATION:** 1, ALONGE STREET, AKOKA, SOMOLU.
- **NO OF FLOORS:** 1 FLOOR
- **STATUS:** IN-USE
- **PURPOSE BUILT:** NO
- **APPROVAL STATUS:** NIL
- **ADJOURNING DEVELOPMENTS:** RESIDENTIAL



RCCG (VICTORY HOUSE)

- **LOCATION:** 9, IBUKUNOLU STREET, AKOKA, SOMOLU.
- **NO OF FLOORS:** 1 FLOOR
- **STATUS:** IN-USE
- **PURPOSE BUILT:** NO
- **APPROVAL STATUS:** NILL
- **ADJOURNING DEVELOPMENTS:** RESIDENTIAL



FOURSQUARE GOSPEL CHURCH

- **LOCATION:** 20, OJO STREET, AKOKA, SOMOLU.
- **NO OF FLOORS:** 1 FLOOR
- **STATUS:** IN-USE
- **PURPOSE BUILT:** NO
- **APPROVAL STATUS:** NILL
- **ADJOURNING DEVELOPMENTS:** RESIDENTIAL



RCCG (THE HOUSE OF HIS PRESENCE)

- **LOCATION:** 19, OJO STREET, AKOKA, SOMOLU.
- **NO OF FLOORS:** 2 FLOORS
- **STATUS:** IN-USE
- **PURPOSE BUILT:** NO
- **APPROVAL STATUS:** IN-USE
- **ADJOURNING DEVELOPMENTS:** RESIDENTIAL



THE PROPHETIC CHURCH OF NIGERIA OVERSEAS



- **LOCATION:** 47, SHOLANKE STREET, AKOKA, SOMOLU.
- **NO OF FLOORS:** 1 FLOOR
- **STATUS:** IN-USE
- **PURPOSE BUILT:** NO
- **APPROVAL STATUS:** NILL
- **ADJOURNING DEVELOPMENTS:** RESIDENTIAL



HOLY CROSS REDEMPTION

- **LOCATION:** 2, OJO STREET, AKOKA, SOMOLU.
- **NO OF FLOORS:** 1 FLOOR
- **STATUS:** IN-USE
- **PURPOSE BUILT:** NO
- **APPROVAL STATUS:** NILL
- **ADJOURNING DEVELOPMENTS:** RESIDENTIAL



Network: Sep 15, 2022 2:27:05 PM GMT+01:00
Local: Sep 15, 2022 2:27:05 PM GMT+01:00
6°31'49.974"N 3°23'4.668"E
3 Adenuga Kajero Street
Shomolu
Lagos



Network: Sep 15, 2022 2:27:18 PM GMT+01:00
Local: Sep 15, 2022 2:27:17 PM GMT+01:00
6°31'49.974"N 3°23'4.668"E
3 Adenuga Kajero Street
Shomolu
Lagos



Network: Sep 15, 2022 2:27:20 PM GMT+01:00
Local: Sep 15, 2022 2:27:20 PM GMT+01:00
6°31'49.95"N 3°23'4.632"E
3 Adenuga Kajero Street
Shomolu
Lagos



RCCG (CORNERSTONE ASSEMBLY ZONE)

- **LOCATION:** 31, SHOBANDE STREET, AKOKA, SOMOLU.
- **NO OF FLOORS:** 1 FLOOR
- **STATUS:** IN-USE
- **PURPOSE BUILT:** NO
- **APPROVAL STATUS:** NILL
- **ADJOURNING DEVELOPMENTS:** RESIDENTIAL



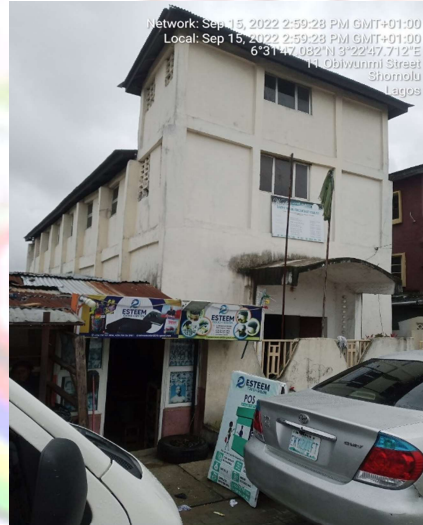
TRUIMPHANT POWER

- **LOCATION:** 37, SHOBANDE STREET, AKOKA, SOMOLU.
- **NO OF FLOORS:** 1 FLOOR
- **STATUS:** IN-USE
- **PURPOSE BUILT:** NO
- **APPROVAL STATUS:** NILL
- **ADJOURNING DEVELOPMENTS:** RESIDENTIAL



SAINT MARK CHURCH OF CHRIST

- **LOCATION:** 9, OBIWUNMI STREET, OFF FOLA AGORO ROAD, AKOKA, SOMOLU.
- **NO OF FLOORS:** 3 FLOORS
- **STATUS:** IN-USE
- **PURPOSE BUILT:** YES
- **APPROVAL STATUS:** UNKNOWN
- **ADJOURNING DEVELOPMENTS:** RESIDENTIAL





RCCG (FOUNTAIN OF LIVING WATER PARISH)

- **LOCATION:** 6, OBIWUNMI STREET, OFF FOLA AGORO ROAD, AKOKA, SOMOLU.
- **NO OF FLOORS:** 1 FLOOR
- **STATUS:** IN-USE
- **PURPOSE BUILT:** NO
- **APPROVAL STATUS:** NIL
- **ADJOURNING DEVELOPMENTS:** RESIDENTIAL





FRCM ALADURA

- **LOCATION:** 23, OBIWUNMI STREET, OFF FOLA AGORO ROAD, AKOKA, SOMOLU.
- **NO OF FLOORS:** 4 FLOORS
- **STATUS:** IN-USE
- **PURPOSE BUILT:** YES
- **APPROVAL STATUS:** UNKNOWN
- **ADJOURNING DEVELOPMENTS:** RESIDENTIAL



Network: Sep 15, 2022 3:03:19 PM GMT+01:00
Local: Sep 15, 2022 3:03:19 PM GMT+01:00
6°31'46.914"N 3°22'43.146"E



Network: Sep 15, 2022 3:03:30 PM GMT+01:00
Local: Sep 15, 2022 3:03:29 PM GMT+01:00
6°31'46.914"N 3°22'43.146"E
12 Church Street
Shomolu
Lagos



Network: Sep 15, 2022 3:02:33 PM GMT+01:00
Local: Sep 15, 2022 3:02:33 PM GMT+01:00
6°31'46.93"N 3°22'43.896"E
24 Obiwunmi Street
Shomolu
Lagos



METHODIST CHURCH NIG.



- **LOCATION:** 20/22, CHURCH STREET, OFF BAJULAYE ROAD, SOMOLU.
- **NO OF FLOORS:** 3 FLOORS
- **STATUS:** IN-USE
- **PURPOSE BUILT:** YES
- **APPROVAL STATUS:** UNKNOWN
- **ADJOURNING DEVELOPMENTS:** RESIDENTIAL



EVERLASTING ROCK APOSTOLIC CHURCH



- **LOCATION:** 28, CHURCH STREET, OFF BAJULAYE ROAD, SOMOLU.
- **NO OF FLOORS:** 2 FLOORS
- **STATUS:** DIFFERENTIAL SETTLEMENT, IN-USE
- **PURPOSE BUILT:** YES
- **APPROVAL STATUS:** UNKNOWN
- **ADJOURNING DEVELOPMENTS:** RELIGIOUS/RESIDENTIAL



RCCG (SOLUTION PARISH)

- **LOCATION:** 19, BAJULAYE ROAD, SOMOLU.
- **NO OF FLOORS:** 3 FLOORS
- **STATUS:** IN-USE
- **PURPOSE BUILT:** YES
- **APPROVAL STATUS:** UNKNOWN
- **ADJOURNING DEVELOPMENTS:** RESIDENTIAL





MOSQUES

IN SOMOLU DISTRICT

SOMOLU DISTRICT HAS ABOUT 23 MOSQUES RECORDED.



OLORUNKEMI MOSQUE

- **LOCATION:** 12, LISABI STREET, OFF SALAMI SHAIBU STREET, SOMOLU.
- **NO OF FLOORS:** 2 FLOORS
- **STATUS:** MIXED-USE
- **PURPOSE BUILT:** NO
- **APPROVAL STATUS:** NILL
- **ADJOURNING DEVELOPMENTS:** RESIDENTIAL



SOMOLU CENTRAL MOSQUE



- **LOCATION:** 28, DUROSIMI STREET, OFF OGUNTOLU STREET, SOMOLU.
- **NO OF FLOORS:** 5 FLOORS
- **STATUS:** IN-USE
- **PURPOSE BUILT:** YES
- **APPROVAL STATUS:** UNKNOWN
- **ADJOURNING DEVELOPMENTS:** RESIDENTIAL



IGBEHIN ADUN MOSQUE

- **LOCATION:** 24, SALAMI SHAIBU STREET, SOMOLU.
- **NO OF FLOORS:** 2 FLOORS
- **STATUS:** MIXED-USE
- **PURPOSE BUILT:** NO
- **APPROVAL STATUS:** NILL
- **ADJOURNING DEVELOPMENTS:**



MOSQUE

- **LOCATION:** 12, BOLAJI OMUPPO STREET, SOMOLU.
- **NO OF FLOORS:** 2 FLOORS
- **STATUS:** IN-USE
- **PURPOSE BUILT:** YES
- **APPROVAL STATUS:** IN-USE
- **ADJOURNING DEVELOPMENTS:** RESIDENTIAL



MOSQUE

- **LOCATION:** 1, HENRY ADIGWE CLOSE, SOMOLU.
- **NO OF FLOORS:** 1 FLOOR
- **STATUS:** IN-USE
- **PURPOSE BUILT:** YES
- **APPROVAL STATUS:** UNKNOWN
- **ADJOURNING DEVELOPMENTS:** RESIDENTIAL



ALUBARIKA MOSQUE

- **LOCATION:** 12, AGUNBIADE STREET, SOMOLU.
- **NO OF FLOORS:** 2 FLOORS
- **STATUS:** IN-USE
- **PURPOSE BUILT:** YES
- **APPROVAL STATUS:** UNKNOWN
- **ADJOURNING DEVELOPMENTS:** RESIDENTIAL





AL-MUNAWWARAH INTERNATIONAL SCHOOL

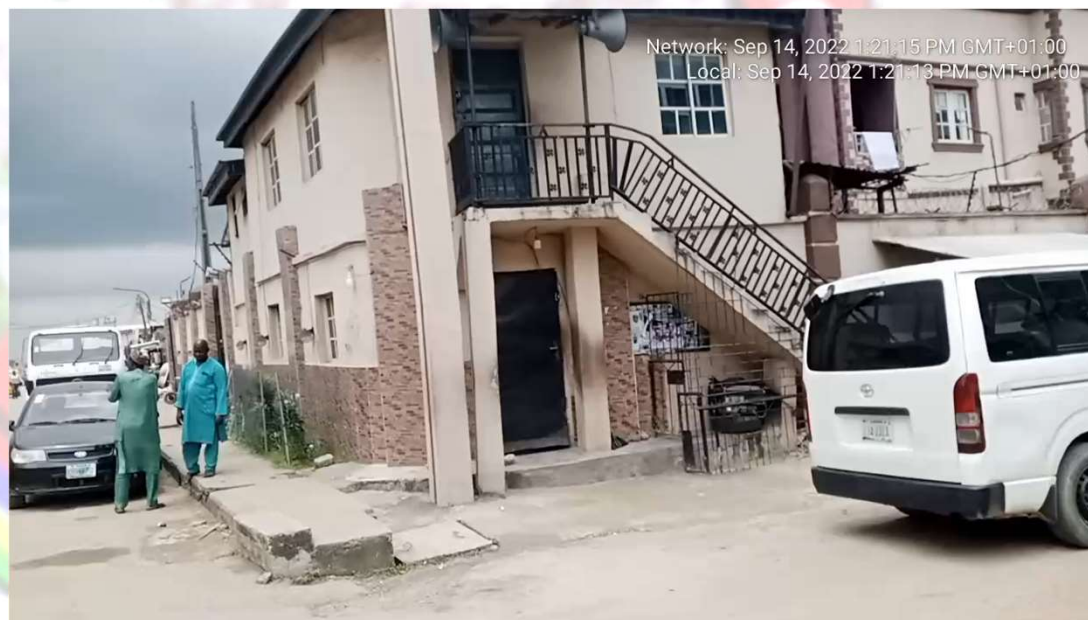
- **LOCATION:** 17, FOLAMI STREET, OFF ABIODUN STREET, SOMOLU.
- **NO OF FLOORS:** 1 FLOOR
- **STATUS:** MIXED-USE
- **PURPOSE BUILT:** NO
- **APPROVAL STATUS:** NILL
- **ADJOURNING DEVELOPMENTS:** RESIDENTIAL





IBUKUNOLUWA MOSQUE

- **LOCATION:** 18, ABIODUN STREET, SOMOLU.
- **NO OF FLOORS:** 2 FLOORS
- **STATUS:** MIXED-USE
- **PURPOSE BUILT:** NO
- **APPROVAL STATUS:** NILL
- **ADJOURNING DEVELOPMENTS:** RESIDENTIAL





TAWAKALITU ALI COMMUNITY MOSQUE

- **LOCATION:** 2, ODUNLAMI STREET, SOMOLU.
- **NO OF FLOORS:** 2 FLOORS
- **STATUS:** MIXED-USE
- **PURPOSE BUILT:** YES
- **APPROVAL STATUS:** NILL
- **ADJOURNING DEVELOPMENTS:**



ISTIJABAH DUA MOSQUE

- **LOCATION:** 12, BAJULAYE COMPOUND, SOMOLU.
- **NO OF FLOORS:** 5 FLOORS
- **STATUS:** IN-USE
- **PURPOSE BUILT:** YES
- **APPROVAL STATUS:** UNKNOWN
- **ADJOURNING DEVELOPMENTS:** RESIDENTIAL



AL - BARKA CENTRAL MOSQUE

- **LOCATION:** 8, HUMANI STREET, OFF BAJULAYE ROAD, SOMOLU.
- **NO OF FLOORS:** 2 FLOORS
- **STATUS:** IN-USE
- **PURPOSE BUILT:** YES
- **APPROVAL STATUS:** UNKNOWN
- **ADJOURNING DEVELOPMENTS:** RESIDENTIAL





TAWAKALITU MOSQUE

- **LOCATION:** 6, ODUNLADE STREET, SOMOLU.
- **NO OF FLOORS:** 3 FLOORS
- **STATUS:** MIXED-USE
- **PURPOSE BUILT:** NO
- **APPROVAL STATUS:** NILL
- **ADJOURNING DEVELOPMENTS:** RESIDENTIAL



ARAROMI MOSQUE

- **LOCATION:** 3, EFON ALAYE STREET, SOMOLU.
- **NO OF FLOORS:** 4 FLOORS
- **STATUS:** HIGHLY DISTRESSED, IN-USE
- **PURPOSE BUILT:** YES
- **APPROVAL STATUS:** UNKNOWN
- **ADJOURNING DEVELOPMENTS:** RESIDENTIAL



IDERA MOSQUE

- **LOCATION:** 18, FADIPE STREET, SOMOLU.
- **NO OF FLOORS:** 4 FLOORS
- **STATUS:** IN-USE
- **PURPOSE BUILT:** YES
- **APPROVAL STATUS:** UNKNOWN
- **ADJOURNING DEVELOPMENTS:** RESIDENTIAL



MOSQUE

- **LOCATION:** 17A, APATA STREET, SOMOLU.
- **NO OF FLOORS:** 2 FLOORS
- **STATUS:** IN-USE
- **PURPOSE BUILT:** YES
- **APPROVAL STATUS:** UNKNOWN
- **ADJOURNING DEVELOPMENTS:** RESIDENTIAL



IFEDAYO MOSQUE

- **LOCATION:** 4B, AKEJU STREET, SOMOLU.
- **NO OF FLOORS:** 2 FLOORS
- **STATUS:** IN-USE
- **PURPOSE BUILT:** YES
- **APPROVAL STATUS:** NILL
- **ADJOURNING DEVELOPMENTS:** RESIDENTIAL





IBUKUNOLUWA CENTRAL MOSQUE

- **LOCATION:** 14, AYODELE STREET, OFF IKORODU ROAD, SOMOLU.
- **NO OF FLOORS:** 2 FLOORS
- **STATUS:** IN-USE
- **PURPOSE BUILT:** YES
- **APPROVAL STATUS:** UNKNOWN
- **ADJOURNING DEVELOPMENTS:** RESIDENTIAL



RIDWANULLAHI MOSQUE

- **LOCATION:** 2, ASUBIARO DRIVE, MOROCCO, SOMOLU.
- **NO OF FLOORS:** 3 FLOORS
- **STATUS:** IN-USE
- **PURPOSE BUILT:** YES
- **APPROVAL STATUS:** UNKNOWN
- **ADJOURNING DEVELOPMENTS:** RESIDENTIAL





SANUSI CENTRAL MOSQUE

- **LOCATION:** 17, ADETAYO OSHO STREET, AKOKA, SOMOLU.
- **NO OF FLOORS:** 4 FLOORS
- **STATUS:** IN-USE
- **PURPOSE BUILT:** YES
- **APPROVAL STATUS:** UNKNOWN
- **ADJOURNING DEVELOPMENTS:** RESIDENTIAL





IBADURAHMAN MOSQUE

- **LOCATION:** 28, OJO STREET, AKOKA, SOMOLU.
- **NO OF FLOORS:** 1 FLOOR
- **STATUS:** MIXED-USE
- **PURPOSE BUILT:** NO
- **APPROVAL STATUS:** NILL
- **ADJOURNING DEVELOPMENTS:** RESIDENTIAL



AKOKA CENTRAL MOSQUE

- **LOCATION:** 51, SHOLANKE STREET, AKOKA, SOMOLU.
- **NO OF FLOORS:** 4 FLOORS
- **STATUS:** IN-USE
- **PURPOSE BUILT:** YES
- **APPROVAL STATUS:** UNKNOWN
- **ADJOURNING DEVELOPMENTS:** RESIDENTIAL



OLORUNTOSIN MOSQUE

- **LOCATION:** 54A, SHOLANKE STREET, AKOKA, SOMOLU.
- **NO OF FLOORS:** 1 FLOOR
- **STATUS:** IN-USE
- **PURPOSE BUILT:** NO
- **APPROVAL STATUS:** NILL
- **ADJOURNING DEVELOPMENTS:** RESIDENTAL





FADL-I-OMAR ISLAMIC MOSQUE

- **LOCATION:** 26, CHURCH STREET, SOMOLU.
- **NO OF FLOORS:** 3 FLOORS
- **STATUS:** DIFFERENTIAL SETTLEMENNT (IN-USE)
- **PURPOSE BUILT:** YES
- **APPROVAL STATUS:** UNKNOWN
- **ADJOURNING DEVELOPMENTS:** CHURCHES LEFT AND RIGHT





THANK YOU

